

# 24' Wide RTM Series

(Ready To Move)



[www.sriregent-saville.ca](http://www.sriregent-saville.ca)

# 24' Wide RTM Series

(Ready To Move)

## STANDARDS & SPECIFICATIONS

### EXTERIOR

- ✓ Colour coordinated metal fascia
- ✓ Vinyl siding & white vinyl soffit
- ✓ 4/12 pitch roof
- ✓ Exterior GFI receptacle - front door
- ✓ Exterior frost-free tap – kitchen sink
- ✓ 30-year architectural fiberglass shingles
- ✓ 7/16" roof sheathing
- ✓ Residential 16" eaves (4 sides)
- ✓ Separate receptacle for heat tape
- ✓ Engineered roof trusses to 2.7 KPA snow load
- ✓ 14" Engineered open web joists (19.2" o.c.)
- ✓ 3/8" wall sheathing on inside & outside of exterior walls
- ✓ 2x6 side walls at 24" o.c. - 8' walls
- ✓ Hangered floor on double LVL rim joist
- ✓ Insulation: R22 walls; R44 ceiling; R48 floor
- ✓ 19/32" T&G subfloor

### KITCHEN

- ✓ Adjustable shelf in all cabinets – (2) upper & (1) lower
- ✓ Double stainless-steel sink
- ✓ Roller drawer slides
- ✓ PVC cabinet doors
- ✓ 18 cu. ft. frost free refrigerator
- ✓ 30" electric range with clock and timer
- ✓ 2-speed range hood with light and fan vented to exterior
- ✓ White kitchen appliances
- ✓ Communication box (empty) at kitchen area
- ✓ Single lever faucet with vegetable sprayer
- ✓ Upper corner cab - narrow reed glass
- ✓ Microwave cabinet with separate circuit (most models)

### MISCELLANEOUS

- ✓ Electric smoke/CO detector(s)
- ✓ 100-amp service panel
- ✓ Main electrical conduit through floor
- ✓ White receptacles and switches
- ✓ Light bulb package
- ✓ Programmable thermostat
- ✓ Airtight Protocol

### BATHROOM

- ✓ Exhaust fan with humidistat in main bath
- ✓ Exhaust fan in ensuite on separate switch
- ✓ Towel bar and towel ring (most models) in each bath
- ✓ Cosmetic box in main bath
- ✓ Showerhead in all baths
- ✓ Shower rod and shower curtain liner in all baths
- ✓ GFI receptacle in all baths
- ✓ Walled tub/shower with single lever pressure balanced faucet in all baths
- ✓ Single lever faucets in all baths
- ✓ Theatrical lights in all baths

### INTERIOR

- ✓ Decorative vinyl covered drywall
- ✓ 6 mil. vapour barrier includes switches and receptacles
- ✓ Plush carpet in LR, MBR, Bedroom #2/#3/#4, FR, hall
- ✓ Quality vinyl floor covering
- ✓ Cathedral ceilings in LR, DR, KIT
- ✓ Ceiling lights in all bedrooms
- ✓ Wire only ceiling light in living room
- ✓ Pendant light in dining room
- ✓ Solid shelving in all closets
- ✓ White embossed passage doors with lever handles
- ✓ 4" ceramic tile backsplash at kitchen and vanities with tile edging
- ✓ 2x4 interior walls
- ✓ Vinyl wrap moulding throughout

### EXTERIOR DOORS & WINDOWS

- ✓ Insulated steel exterior doors, 36" front and rear (where possible) with peepholes and dead-bolts with lever door handles
- ✓ Coach lights at all exterior doors
- ✓ LowE PVC windows and sills with screens

### UTILITIES

- ✓ Plumbed and wired for washer/dryer
- ✓ Natural gas high efficiency furnace
- ✓ Dryer vent rough in
- ✓ Electric hot water tank
- ✓ Overhead solid shelf at washer/dryer area
- ✓ Insulated lines in HWT cavity

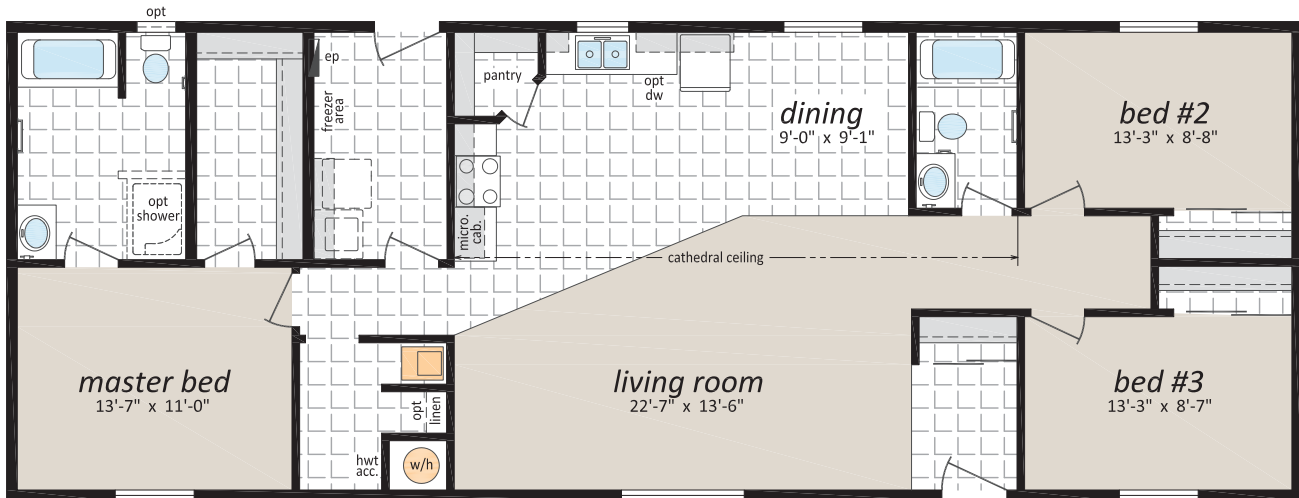


# 24' Wide RTM Series

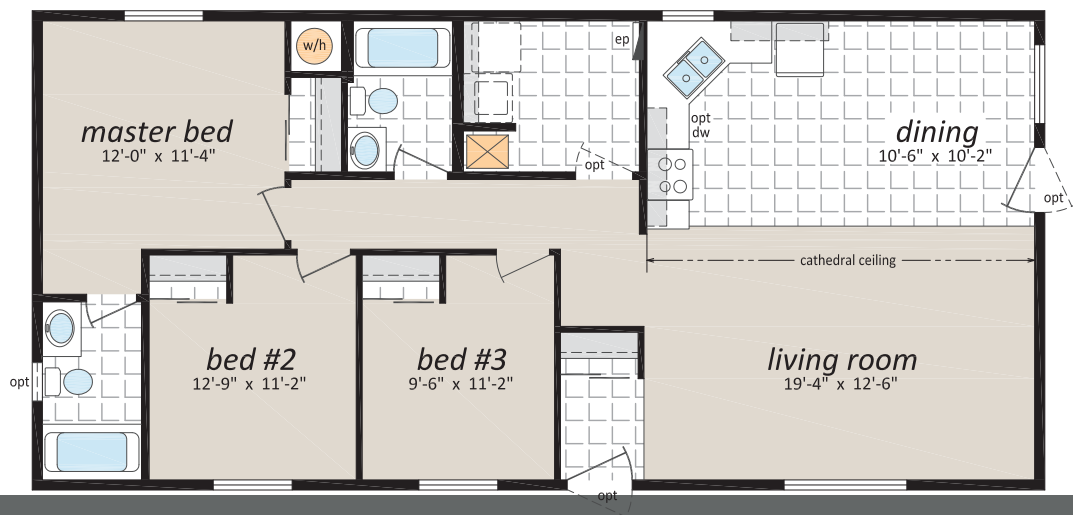
(Ready To Move)

**RTM-24001**, 24' x 64' - 1,536 sq. ft.

Note: rendering shown on coverpage



**RTM-24003**, 24' x 50' - 1,200 sq. ft.



## 24' Wide RTM Series

(Ready To Move)

**RTM-24005**, 24' x 62' - 1,488 sq. ft.

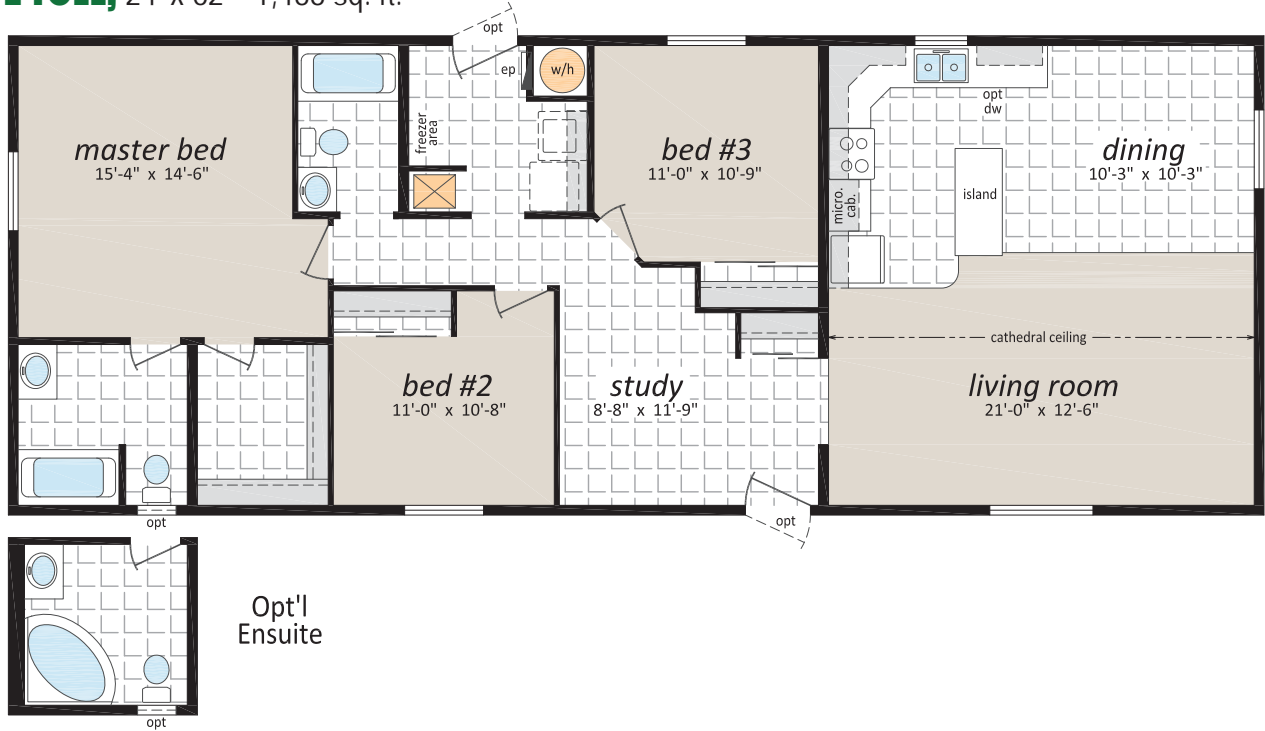




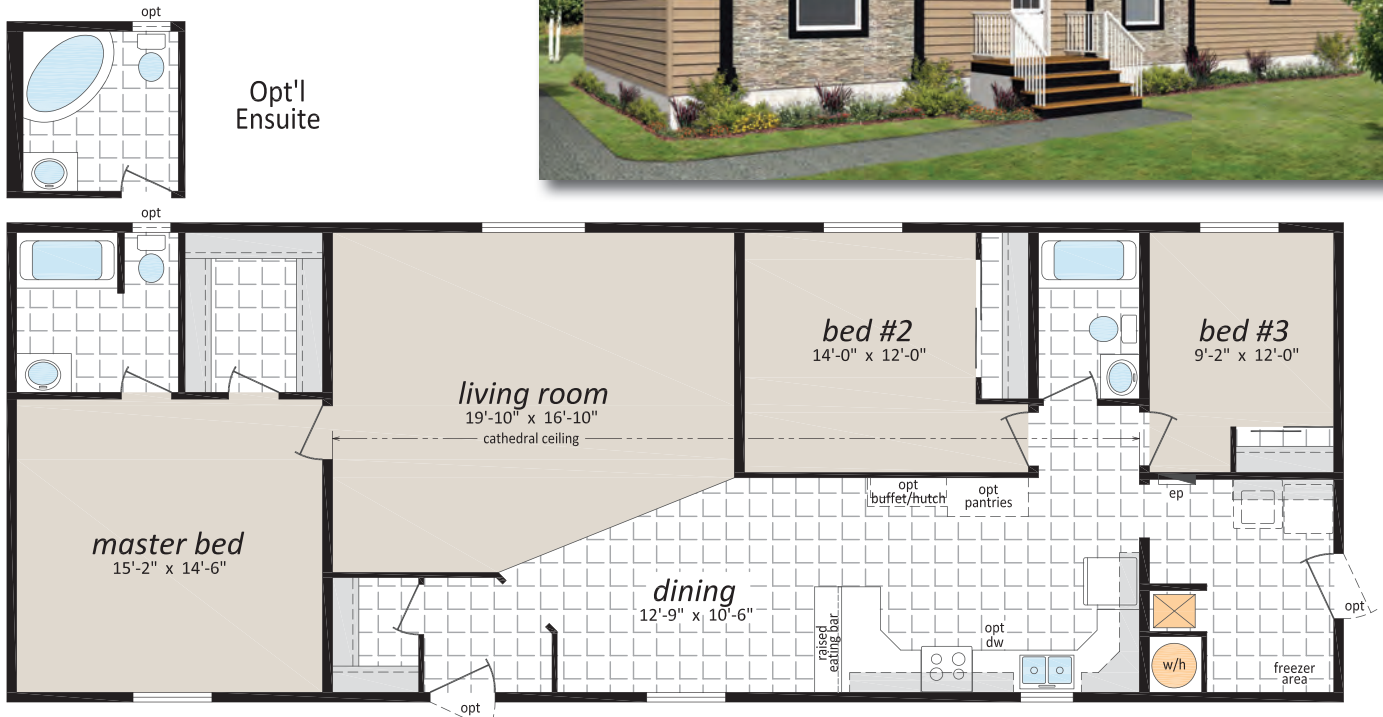
# 24' Wide RTM Series

(Ready To Move)

**RTM-24011**, 24' x 62' - 1,488 sq. ft.



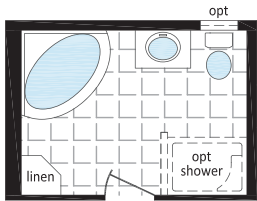
**RTM-24013**, 24' x 66' - 1,584 sq. ft.



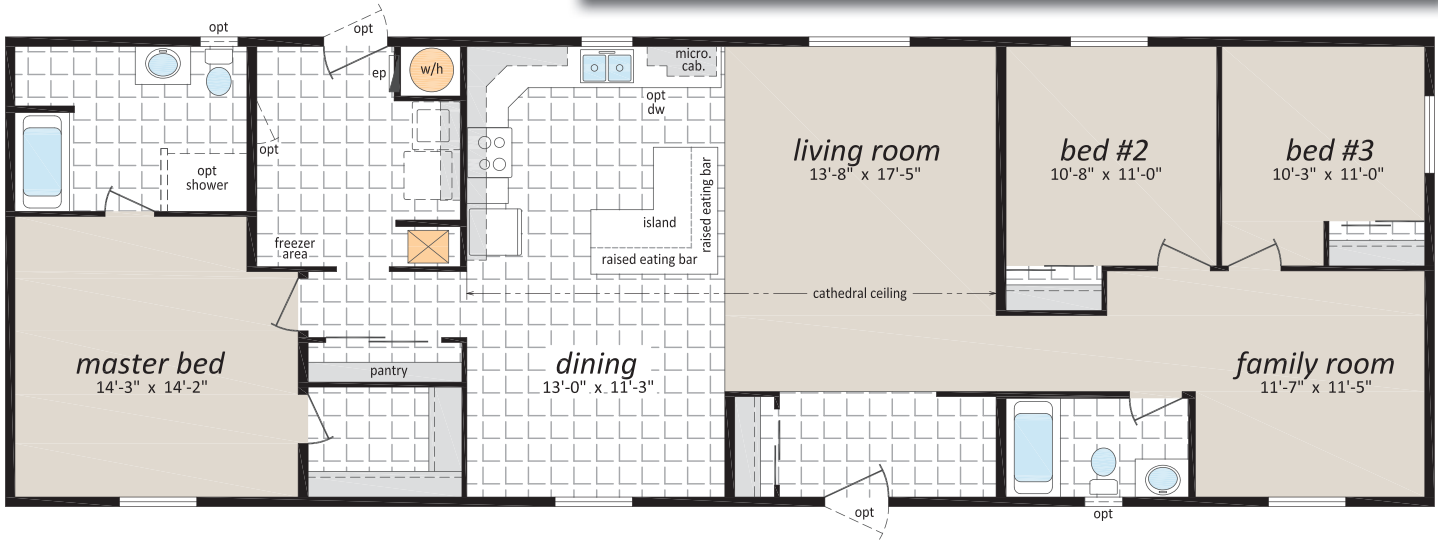
# 24' Wide RTM Series

(Ready To Move)

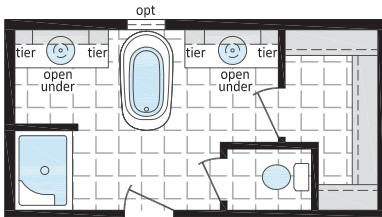
**RTM-24015**, 24' x 72' - 1,728 sq. ft.



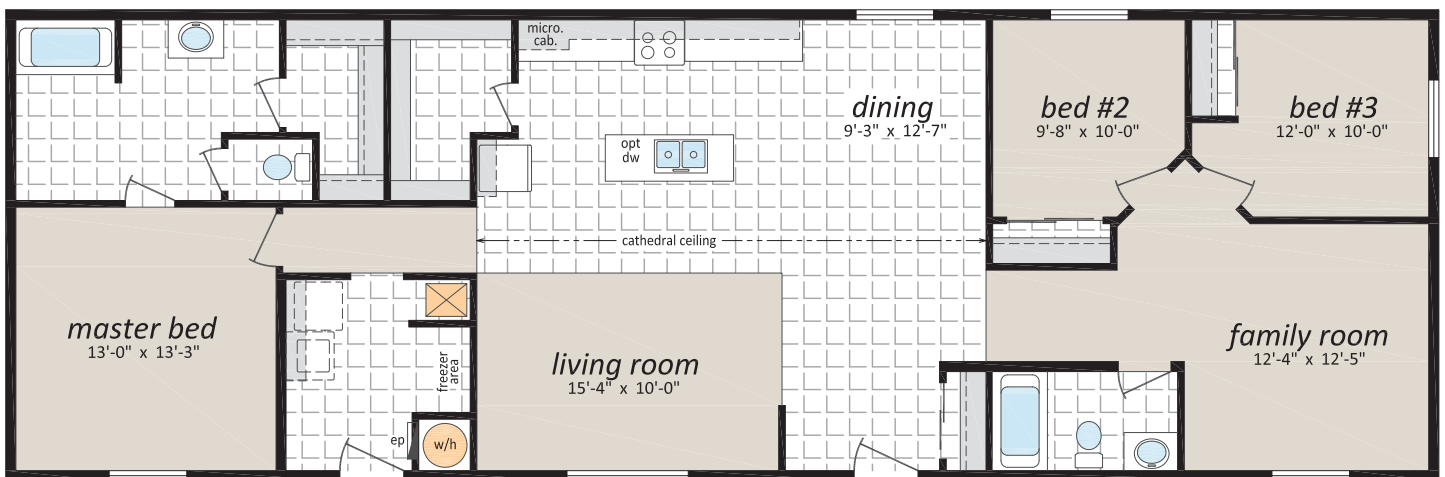
Opt'l  
Ensuite



**RTM-24037**, 24' x 72' - 1,728 sq. ft.



Opt'l  
Ensuite



# 24' Wide RTM Series

(Ready To Move)

## OPTIONAL FEATURES

### EXTERIOR

- ☐ Shutters (Two Styles)
- ☐ Diamond Cut Ceilings
- ☐ Three and Four Light Bay Windows
- ☐ Octagon Windows
- ☐ Segmented Block Windows
- ☐ Lattice in Windows
- ☐ Skylights
- ☐ Patio, Garden and Cottage Doors
- ☐ Storm Doors
- ☐ Exterior Door with Half Round, 9 Lite or Franklin Insert
- ☐ Turbine Vents
- ☐ Door Chimes
- ☐ Exterior Recessed Pot Light(s)
- ☐ Extra Exterior GFI
- ☐ High Snow Load Roof

### INTERIOR

- ☐ Fully Finished Drywall
- ☐ Media Room Package
- ☐ Laminate Flooring
- ☐ Upgrade Vinyl Floor Coverings
- ☐ French Doors
- ☐ Storage Bench
- ☐ Freezer Cabinets
- ☐ Soak Sink with Cabinet
- ☐ Utility Room Door
- ☐ Ceiling Fan with Lights
- ☐ Chandeliers
- ☐ Recessed Fluorescent Lights
- ☐ Under Counter Lighting
- ☐ Archways

### BATHROOM

- ☐ 72" Tub/Shower
- ☐ Corner Oval Jetted Tub
- ☐ 2 Person Jetted Tub
- ☐ 36", 48" or 60" Shower c/w Glass Doors
- ☐ Handicap Toilet
- ☐ Tri-Mirror Medicine Cabinet
- ☐ Grab Bars
- ☐ Deluxe Shower Curtain
- ☐ Banjo Countertop on Vanity

### KITCHEN

- ☐ Various Cabinet Door Selections
- ☐ Wand Style Deluxe Single Lever Kitchen Faucet
- ☐ Corner Glass Cabinet Doors
- ☐ Island Work Centre
- ☐ Planning Centre
- ☐ Lazy Susan
- ☐ Granite Composite Upgrade Sink
- ☐ Oak Counter Edging
- ☐ Black or Stainless Appliances
- ☐ Built-In Dishwasher
- ☐ Combination Microwave/Range Hood
- ☐ Eye Level Oven and Cook Top Range
- ☐ Self Cleaning Range
- ☐ Two Door Side by Side Refrigerator

### UTILITIES

- ☐ Gas Fireplace c/w Air Circulating Fan
- ☐ 40 Gallon U.S. Gas Water Heater
- ☐ Forced Air Electric Furnace
- ☐ Air Conditioner-Ready Furnace
- ☐ Washer and Dryer
- ☐ Stacking Washer and Dryer
- ☐ Central Vacuum System
- ☐ Roughed in for Central Vacuum
- ☐ 200 Amp Service Panel
- ☐ Extra Telephone Jack(s)



# 24' Wide RTM Series

(Ready To Move)



[www.sriregent-saville.ca](http://www.sriregent-saville.ca)

This is not a fully detailed specification. SRI Homes reserves the right to change specifications, designs, materials and suppliers without notice and without incurring obligation. Information contained herein is from data available at the time of printing. Square footage and dimensions are approximate. Photos and renderings may show optional features. 4/2023